



Parent's Guide

Play & Learn Laptop



vtech®

MOON AND ME, related characters, and licensed article TM and © 2019 Tiddle Toddle LLC & Moon and Me Productions Limited. All Rights Reserved.

91-003208-011 © UK

VTech understands that a child's needs and abilities change as they grow and with that in mind we develop our toys to teach and entertain at just the right level...

vtech Baby

Toys that will stimulate their interest in different textures, sounds and colours

I am...

...responding to colours, sounds and textures

...understanding cause and effect

...learning to touch, reach, grasp, sit-up, crawl and toddle

Pre-School

Interactive toys to develop their imagination and encourage language development

I want...

...to get ready for school by starting to learn the alphabet and counting

...my learning to be as fun, easy and exciting as can be

...to show my creativity with drawing and music so my whole brain develops

Electronic Learning Computers

Cool, aspirational and inspiring computers for curriculum related learning

I need...

...challenging activities that can keep pace with my growing mind

...intelligent technology that adapts to my level of learning

...National Curriculum based content to support what I'm learning at school

4-10 years

3-6 years

Birth-36 months



To learn more about this and other VTech® products, visit www.vtech.co.uk

INTRODUCTION

Thank you for purchasing the **VTech® Moon and Me Play & Learn Laptop**. Colourful buttons introduce characters, shapes, colours and music while the light up screen flashes with the sounds. Features a realistic mouse for role-play fun, a sing-along song, real character voices and a convenient handle for on-the-go learning!



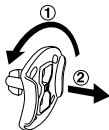
INCLUDED IN THIS PACKAGE

- One **VTech®** Moon and Me **Play & Learn Laptop**
- One Parent's Guide

WARNING: All packing materials such as tape, plastic sheets, packaging locks, removable tags, cable ties and packaging screws are not part of this toy and should be discarded for your child's safety.

NOTE: Please keep this parent's guide as it contains important information.

Unlock the packaging locks:

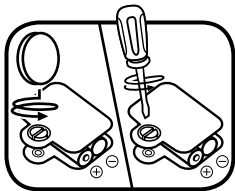


- ① Rotate the packaging locks 90 degrees anticlockwise.
- ② Pull out the packaging locks.

GETTING STARTED

BATTERY REMOVAL AND INSTALLATION

1. Make sure the unit is turned **OFF**.
2. Locate the battery cover on the bottom of the unit. Use a coin or a screwdriver to loosen the screw.
3. If used or spent batteries are present, remove these batteries from the unit by pulling up on one end of each battery.
4. Install 2 new AA (AM-3/LR6) batteries following the diagram inside the battery box. (The use of new alkaline batteries is recommended for maximum performance).
5. Replace the battery cover and tighten to secure.



BATTERY NOTICE

- Use new alkaline batteries or fully charged NI-MH (Nickel Metal-hydride) rechargeable batteries for best performance.
- Use only batteries of the same or equivalent type as recommended.
- Do not mix different types of batteries: alkaline, standard (carbon-zinc) or rechargeable, or new and used batteries.
- Do not use damaged batteries.
- Insert batteries with the correct polarity.
- Do not short-circuit the battery terminals.
- Remove exhausted batteries from the toy.
- Remove batteries during long periods of non-use.
- Do not dispose of batteries in fire.
- Do not charge non-rechargeable batteries.
- Remove rechargeable batteries from the toy before charging (if removable).
- Rechargeable batteries are only to be charged under adult supervision.

Disposal of batteries and product



The crossed-out wheeled bin symbols on products and batteries, or on their respective packaging, indicates they must not be disposed of in domestic waste as they contain substances that can be damaging to the environment and human health.



The chemical symbols Hg, Cd or Pb, where marked, indicate that the battery contains more than the specified value of mercury (Hg), cadmium (Cd) or lead (Pb) set out in Battery Directive (2006/66/EC).

The solid bar indicates that the product was placed on the market after 13th August, 2005.

Help protect the environment by disposing of your product or batteries responsibly.




For more information, please visit:

www.recycle-more.co.uk

www.recyclenow.com




PRODUCT FEATURES

1. OFF/VOLUME CONTROL SWITCH

To turn the unit **ON**, slide the **Off/Volume Control Switch** to the **Low Volume** () or the **High Volume** () position. To turn the unit **OFF**, slide the **Off/Volume Control Switch** to the **Off** () position.



2. MODE SELECTOR SWITCH

To choose a mode of play, slide the **Mode Selector Switch** to the **Explore Mode** (), **Learn Mode** () or the **Music Mode** () position.



3. AUTOMATIC SHUT-OFF

To preserve battery life, the **VTech® Moon and Me Play & Learn Laptop** will automatically shut-off after approximately 30 seconds without input. The unit can be turned on again by pressing any button, moving the mouse or by opening the laptop lid.

Note: If the unit repeatedly shuts off quickly, we suggest changing the batteries.

ACTIVITIES

1. Slide the **Off/Volume Control Switch** to turn the unit **ON**. You will hear a playful sing-along song and a fun phrase in **Explore Mode** and **Music Mode**. In **Learn Mode** you will hear a fun phrase and a short tune. The lights will flash with the sounds.



2. Slide the **Mode Selector Switch** to choose a mode of play. You will hear a playful sing-along song and a fun phrase in **Explore Mode** and **Music Mode**. In **Learn Mode** you will hear a fun phrase and a short tune. The lights will flash with the sounds. If the **Laptop Lid** is closed, you will hear a reminder to open the laptop.



3. Open or close the **Laptop Lid** to hear fun sounds and short tunes. The lights will flash with the sounds.



4. Move the **Mouse** to activate fun sounds in **Explore Mode** and **Learn Mode**. In **Music Mode**, move the **Mouse** to hear music notes played or to play the current melody one note at a time. The lights on the screen will follow the direction that the **Mouse** is moved in.



5. Press the **Shape/Colour Buttons** in **Explore Mode** to learn about the Moon and Me characters and to hear fun sounds and short tunes. In **Learn Mode** you will learn about colours and shapes. In **Music Mode** you will hear melodies. Press the **Shape/Colour Buttons** whilst a melody is playing to add fun sounds. The lights will flash with the sounds.



6. Press the **Question/Music Button** to hear fun phrases, short tunes and a song in **Explore Mode**. In **Learn Mode** you will be asked to find a coloured shape, press the **Shape/Colour Buttons** to answer. In **Music Mode** you will hear a song or a melody with fun sounds added. The lights will flash with the sounds.



CARE & MAINTENANCE

1. Keep the unit clean by wiping it with a slightly damp cloth.
2. Keep the unit out of direct sunlight and away from any direct heat sources.
3. Remove the batteries when the unit will not be in use for an extended period of time.
4. Do not drop the unit on hard surfaces and do not expose the unit to moisture or water.

TROUBLESHOOTING

If for some reason the unit stops working or malfunctions, please follow these steps:

1. Please turn the unit OFF.
2. Interrupt the power supply by removing the batteries.
3. Let the unit stand for a few minutes, then replace the batteries.
4. Turn the unit ON. The unit should now be ready to play with again.
5. If the product still does not work, install a brand new set of batteries.

If the problem persists, please contact our Consumer Services Department and a service representative will be happy to help you.

CONSUMER SERVICES

Creating and developing **VTech®** products is accompanied by a responsibility that we at **VTech®** take very seriously. We make every effort to ensure the accuracy of the information, which forms the value of our products. However, errors sometimes can occur. It is important for you to know that we stand behind our products and encourage you to call our Consumer Services Department with any problems and/or suggestions that you might have. A service representative will be happy to help you.

UK Customers:

Phone: 0330 678 0149 (from UK) or +44 330 678 0149 (outside UK)

Website: www.vtech.co.uk/support

Australian Customers:

Phone: 1800 862 155

Website: support.vtech.com.au

NZ Customers:

Phone: 0800 400 785

Website: support.vtech.com.au

PRODUCT WARRANTY/ CONSUMER GUARANTEES

UK Customers:

Read our complete warranty policy online at vtech.co.uk/warranty.

Australian Customers:

VTECH ELECTRONICS (AUSTRALIA) PTY LIMITED - CONSUMER GUARANTEES

Under the Australian Consumer Law, a number of consumer guarantees apply to goods and services supplied by VTech Electronics (Australia) Pty Limited. Please refer to vtech.com.au/consumerguarantees for further information.



CLASS 1
LED PRODUCT

**Visit our website for more
information about our products,
downloads, resources and more.**

www.vtech.co.uk
www.vtech.com.au

